

COMMUNITY UPDATE COVID-19

July 7, 2022:

The Town of Mansfield continues its community update on our website with our up to date information and important tips for the public as it relates to the COVID-19 pandemic. For more complete information, please see the town [coronavirus webpage](#).

**COVID-19 ANTIGEN TEST AVAILABILITY NOTIFICATION
DRIVE-THROUGH EVENT Sunday July, 10, 2022 from 8:30-12:30**



FOR IMMEDIATE RELEASE

Name: Kevin Dumas, Mansfield Town Manager
Phone: 508-261-7370
Email: kdumas@mansfieldma.com

COVID-19 ANTIGEN TEST AVAILABILITY NOTIFICATION

[MANSFIELD, MA, June 30, 2022] – The Baker/Polito Administration will be distributing over 2 million 2 million rapid tests for municipalities to provide residents. The Town of Mansfield will be receiving 4,410 COVID-19 home test kits and each kit contains 2 tests.

Town Manager Kevin Dumas stated that *“Testing remains important as it relates to minimizing the spread of the virus to others. We encourage Mansfield residents to take advantage of these free tests to have at home.”*

We encourage all Mansfield residents to join us at our **drive-through** event on Sunday, 7/10 from 8:30am to 12:30pm at Mansfield High School at 250 East Street to receive your free test kits. The drive-through will be located in the loop driveway at the front entrance of the High School.

Separate from this event, the Council on Aging at 255 Hope Street will have tests available while supplies last for those Mansfield residents age 60 and older.

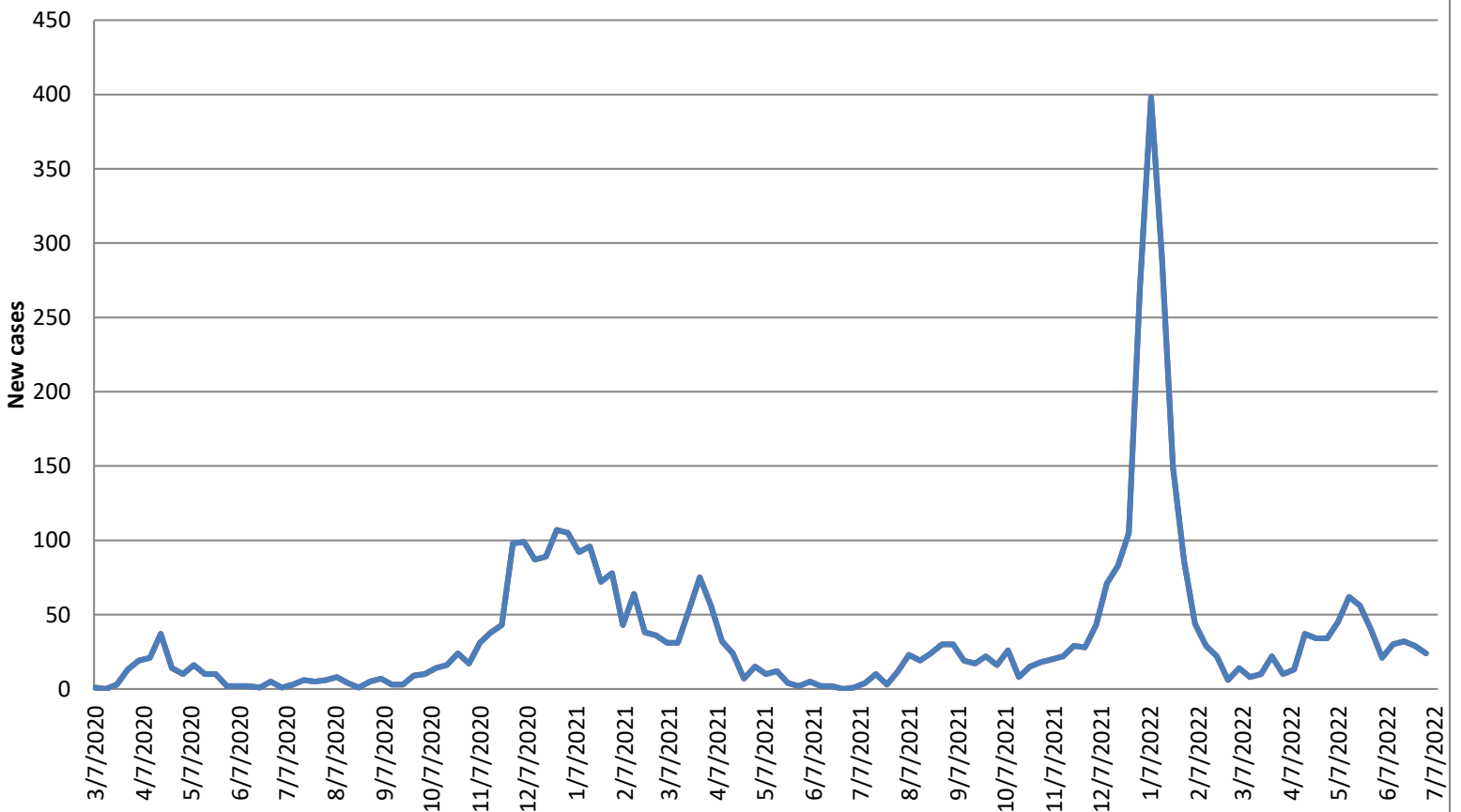
If you would like more information about this topic, please call Town Manager Kevin Dumas at (508) 261-7370.

###

- As of today, please see the below chart that represents our communities COVID-19 relates cases:

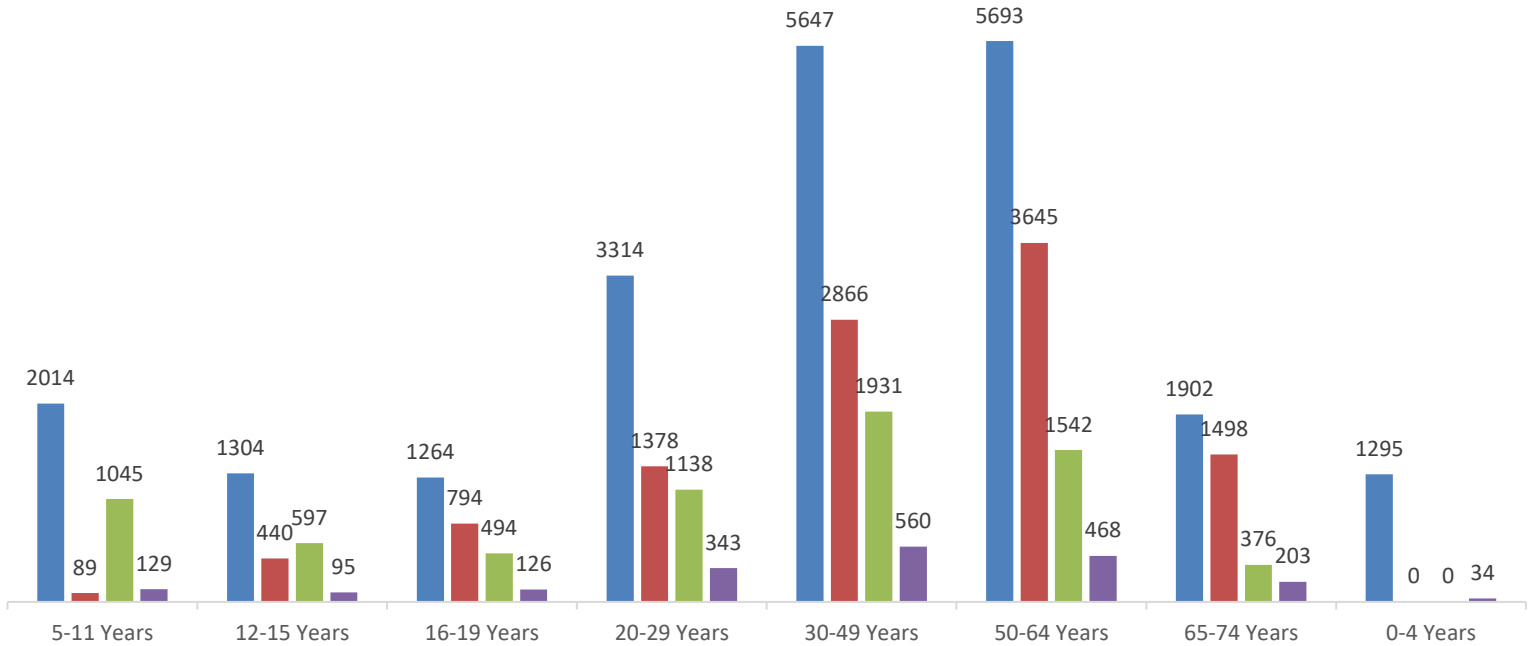
<i>Mansfield Covid-19 Workflow</i>	#	
Positive COVID-19 under isolation	28	(updated 07/07 08:00)
Positive Cases recovered	4681	
Total tested positive since beginning:	4748	
Covid-19 Related Deaths	39	Last Covid death in Mansfield 6/12/22

New COVID-19 cases per week*
March 7, 2020 - July 2, 2022



Vaccine Distribution in Mansfield - data through June 30, 2022

■ Population ■ Individuals with booster doses ■ Fully vaccinated individual, no booster ■ Partially vaccinated individuals



All data obtained from [Massachusetts COVID-19 vaccination data and updates | Mass.gov](https://www.mass.gov/info-details/massachusetts-covid-19-vaccination-data-and-updates)

COVID-19 Vaccine Update: Everyone 6 months and older should get vaccinated against COVID-19. Getting vaccinated can help protect you from severe disease, hospitalization, and death from COVID-19. Learn more: <https://bit.ly/3CJme0v>. Find a Vaccine Location, including boosters: www.vaxfinder.mass.gov



- [Get Vaccinated and Boosted Against COVID-19 for individuals ages 6 months+](https://www.mass.gov/info-details/massachusetts-covid-19-vaccination-data-and-updates)

The CDC recommends COVID-19 vaccines for everyone 6 months and older and boosters for everyone 5 years and older, if eligible.

[Americans should stay "up to date" with COVID-19 vaccines](#), rather than be "fully vaccinated." Up to date means a person has received all recommended COVID-19 vaccines, including any booster dose(s) when eligible. Fully vaccinated means a person has received their primary series of COVID-19 vaccines.

Who is eligible to get a booster?

CDC recommends everyone ages 5 years and older receive a COVID-19 vaccine booster after completing their primary COVID-19 vaccination series. Some people can receive two boosters. The CDC new [interactive tool](#) helps users identify whether they (or someone else) need to receive a booster dose of COVID-19 vaccine.

1st booster

Everyone age 5 and older can get a booster after they have had their primary vaccine series:

- At least 5 months after completion of an mRNA (Pfizer or Moderna) vaccine primary series
- At least 2 months after completion of a Janssen/J&J primary dose.

2nd booster

- Anyone age 50 and older may get a 2nd booster at least 4 months after their 1st booster
- All people aged 12 years and older who are moderately or severely immunocompromised
- Anyone age 18-49 years who are not moderately or severely immunocompromised and who received Janssen/J&J COVID-19 Vaccine as both their primary series dose and their booster dose, at least 4 months after the first Janssen booster dose

Important Links for Vaccination:

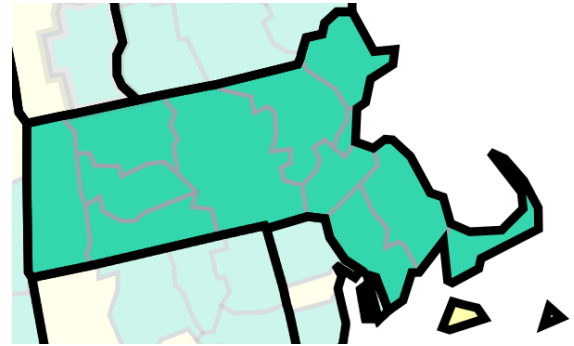
- MA COVID-19 Vaccine Information: www.mass.gov/info-details/massachusetts-covid-19-vaccine-information
- Find a Vaccine Location, including boosters: www.vaxfinder.mass.gov
- COVID-19 Vaccine frequently asked questions: www.mass.gov/info-details/covid-19-vaccine-frequently-asked-questions
- COVID-19 vaccine booster shots, ages 12+: www.cdc.gov/coronavirus/2019-ncov/vaccines/booster-shot.html
- COVID-19 booster frequently asked questions: www.mass.gov/info-details/covid-19-booster-frequently-asked-questions
- Generate a COVID-19 digital vaccine card: www.mass.gov/massachusetts-vaccination-records
- Request a copy of your vaccine record: www.mass.gov/info-details/requesting-a-copy-of-your-covid-19-vaccination-record

- [Bristol County COVID-19 Community Level is identified as LOW](#)

[COVID-19 Community Levels](#) are a tool to help communities decide what prevention steps to take based on the latest data. Levels can be low, medium, or high and are determined by looking at hospital beds being used, hospital admissions, and the total number of new COVID-19 cases in an area. Take precautions to protect yourself and others from COVID-19 based on the COVID-19 Community Level in your area.

In **Bristol County**, community level is **LOW**

- Stay [up to date](#) with COVID-19 vaccines.
- [Get tested](#) if you have symptoms. Wear a mask if you have symptoms, a positive test, or exposure to someone with COVID-19.
- Wear a mask on [public transportation](#). You may choose to wear a mask at any time as an additional precaution to protect yourself and others.



COVID-19 Community Level designations throughout Massachusetts today:

County	COVID-19 Community Level
Barnstable	Low
Berkshire	Low
Bristol	Low
Dukes	Medium
Essex	Low
Franklin	Low
Hampden	Low

County	COVID-19 Community Level
Hampshire	Low
Middlesex	Low
Nantucket	Low
Norfolk	Low
Plymouth	Low
Suffolk	Low
Worcester	Low

What Prevention Steps Should You Take Based on Your COVID-19 Community Level?

Community Burden Levels		
Low	Medium	High
<ul style="list-style-type: none"> • Stay up to date with COVID-19 vaccines • Get tested if you have symptoms 	<ul style="list-style-type: none"> • If you are at high risk for severe illness, talk to your healthcare provider about whether you need to wear a mask and take other precautions • Stay up to date with COVID-19 vaccines • Get tested if you have symptoms 	<ul style="list-style-type: none"> • Wear a mask indoors in public • Stay up to date with COVID-19 vaccines • Get tested if you have symptoms • Additional precautions may be needed for people at high risk for severe illness

People may choose to mask at any time. People with symptoms, a positive test, or exposure to someone with COVID-19 should wear a mask.

- [Isolation and Quarantine Guidance for the General Public](#)

Important Links for Isolation and Quarantine:

- Mansfield COVID information: www.mansfieldma.com/601/Covid-Information
- COVID-19 Isolation and Quarantine Guidance for the General Public: www.mass.gov/info-details/covid-19-isolation-and-quarantine-guidance-for-the-general-public
- Children in Child Care, K-12, Out-of-School Time and Rec Camp/Program Settings: <https://www.mass.gov/info-details/covid-19-isolation-and-quarantine-guidance-for-children-in-child-care-k-12-out-of-school-time-ost-and-recreational-campprogram-settings>
- How To Talk To Your Close Contacts: www.cdc.gov/coronavirus/2019-ncov/daily-life-coping/tell-your-contacts.html
- Enable MassNotify on your smartphone: www.mass.gov/info-details/enable-massnotify-on-your-smartphone

The CDC has a new [COVID-19 Quarantine and Isolation \(Q&I\) Calculator](#) which offers customized information to address each unique situation. It takes the stress out of figuring when, and for how long, people with COVID-19 and close contacts need to stay home, get tested, and wear a well-fitting mask. The calculator provides important information about what precautions people with COVID-19 and their close contacts can take to protect loved ones and prevent COVID-19 in their communities. This online, mobile-friendly calculator provides a simple, easy-to-use way to help people follow CDC's [Quarantine and Isolation](#) guidance and get customized information that applies to their unique situation.

To use the tool:

- People with COVID-19 who do not have symptoms need to know the date they were tested for COVID-19
- People with COVID-19 who have symptoms need to know the date their symptoms began
- Close contacts need to know the date they last came into close contact with someone with COVID-19

- [Treatments for COVID-19](#)

Treatment is available for people who are at increased risk of severe disease, test positive for COVID-19 and have any symptoms, even mild ones (such as runny nose or cough). The sooner you start treatment, the better.

- **Call your doctor right away** to learn about your treatment options, OR
- **Call (508) 213-1380** to speak with a Gothams representative. If you're eligible for COVID-19 treatment, they can schedule an infusion appointment for you at one of their 7 sites in Massachusetts. Gothams COVID-19 Self-Referral Treatment Line is open Monday–Saturday from 8 a.m. to 6 p.m.

- [Public Health Advisory regarding COVID-19 Testing](#)

The Massachusetts Department of Public Health advises all residents to seek COVID-19 tests when exhibiting [COVID symptoms](#), or five days following a known close contact with someone diagnosed with COVID pursuant to MA DPH quarantine and isolation protocols, updated in accordance with the new CDC guidance



Important Links for Testing:

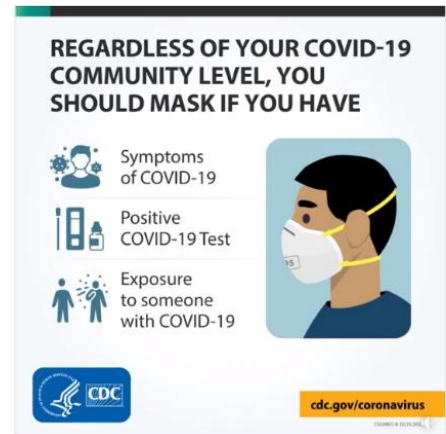


- CDC's online COVID-19 Viral Testing Tool: <https://bit.ly/covid-testing-tool>
- MA DPH COVID-19 Testing information: <https://www.mass.gov/covid-19-testing>
- Find a COVID-19 Test: <https://www.mass.gov/info-details/find-a-covid-19-test>
- Using a COVID-19 Self-Test: <https://www.mass.gov/info-details/using-a-covid-19-self-test>
- CDC COVID-19 Testing: <https://www.cdc.gov/coronavirus/2019-ncov/testing/index.html>
- Order free At-Home COVID-19 Tests: <https://special.usps.com/testkits>

- [COVID-19 Mask Requirements](#)

Free N95 Respirators

The Strategic National Stockpile has distributed N95 respirators to pharmacy distribution centers throughout the country. Click [here](#) to find free masks (N95 respirators) at a participating location near you. For information about how to use your N95 correctly, see [How to Use Your N95 Respirator](#).



Important Links for Masks and Respirators:

- COVID-19 Mask Information: www.mass.gov/info-details/covid-19-mask-information
- Types of Masks and Respirators: www.cdc.gov/coronavirus/2019-ncov/prevent-getting-sick/types-of-masks.html
- Your Guide to Masks: www.cdc.gov/coronavirus/2019-ncov/prevent-getting-sick/about-face-coverings.html
- Improve How Your Mask Protects You: www.cdc.gov/coronavirus/2019-ncov/your-health/effective-masks.html
- Types of Masks and Respirators: www.cdc.gov/coronavirus/2019-ncov/prevent-getting-sick/types-of-masks.html
- Find Free Masks (N95 Respirators): www.cdc.gov/coronavirus/2019-ncov/your-health/free-masks.html
- [Mansfield Public School COVID information and dashboard](#)

For information about the schools and COVID, please see their School Health and COVID Information webpage: <https://sites.google.com/mansfieldschools.com/covid-19/home>