

COMMUNITY UPDATE COVID-19

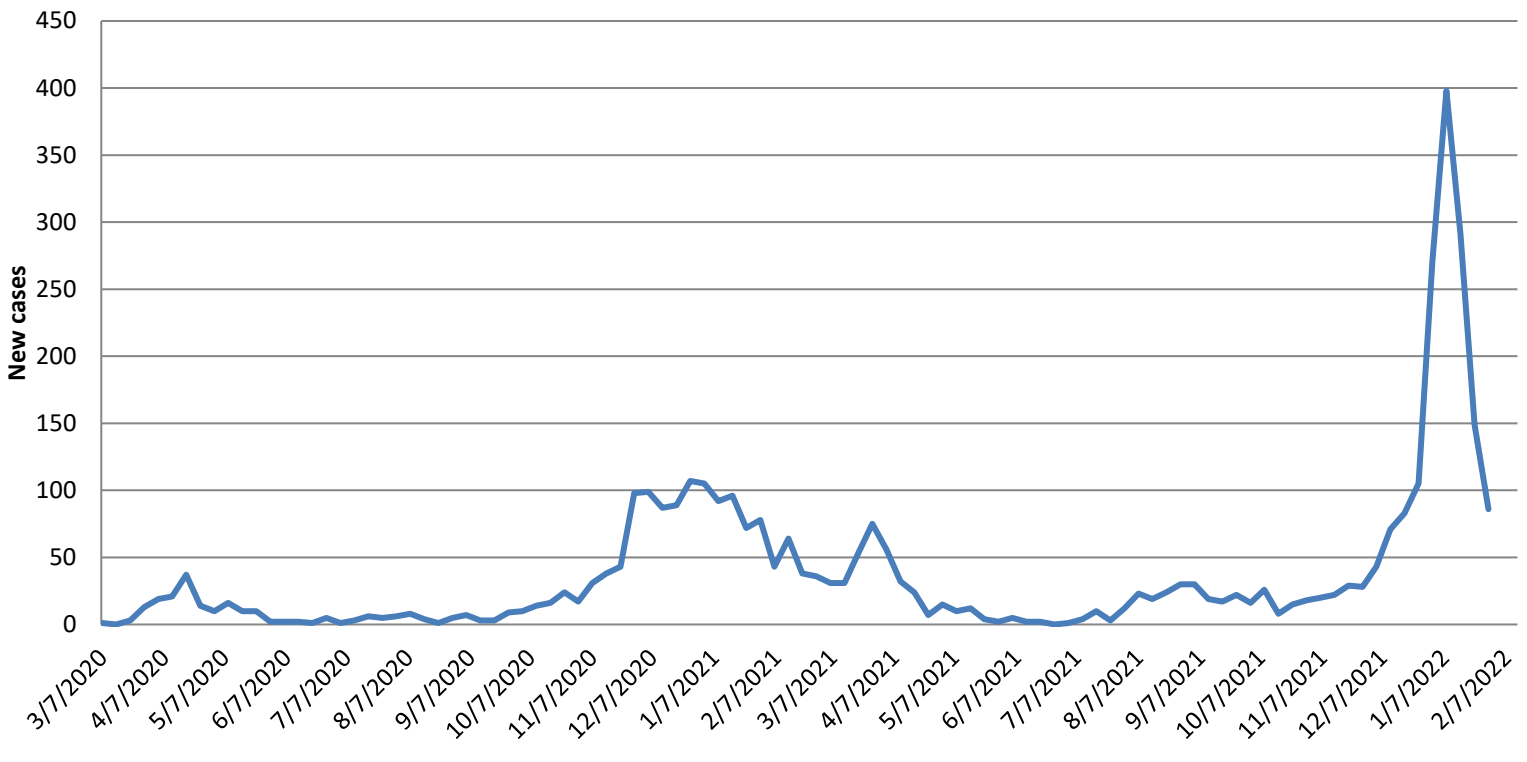
February 2, 2022:

The Town of Mansfield continues its community update on our website with our up to date information and important tips for the public as it relates to the COVID-19 pandemic. For more complete information, please see the town [coronavirus webpage](#).

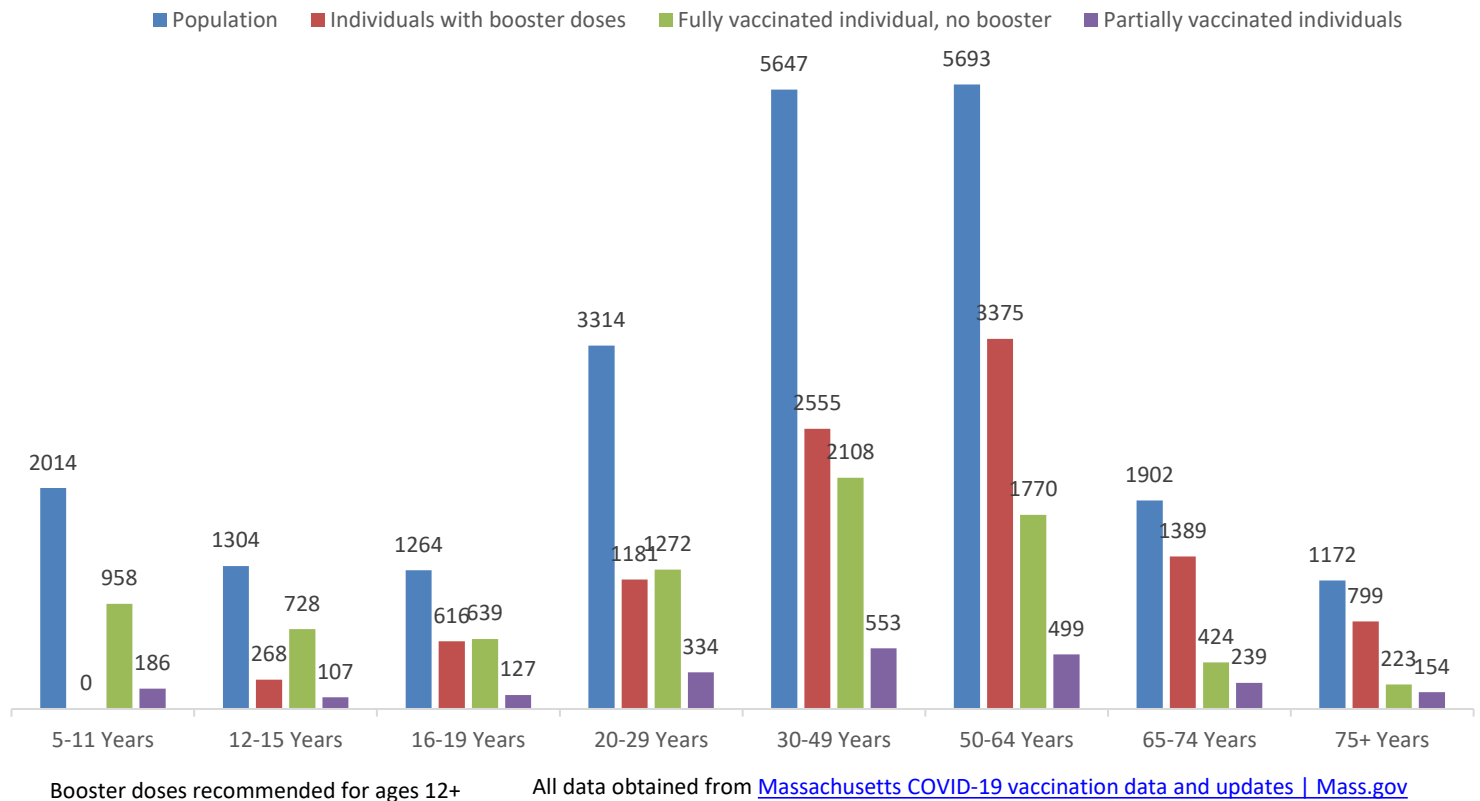
- **As of today, please see the below chart that represents our communities COVID-19 relates cases:**

<i>Mansfield Covid-19 Workflow</i>	#	
Positive COVID-19 under isolation	93	(updated 02/02 08:00)
Positive Cases recovered	3887	
Total tested positive since beginning:	3010	
Covid-19 Related Deaths	30	Last Covid death in Mansfield 1/18/22

New COVID-19 cases per week March 7, 2020 - January 29, 2022



Vaccine Distribution in Mansfield- data through January 25, 2022*

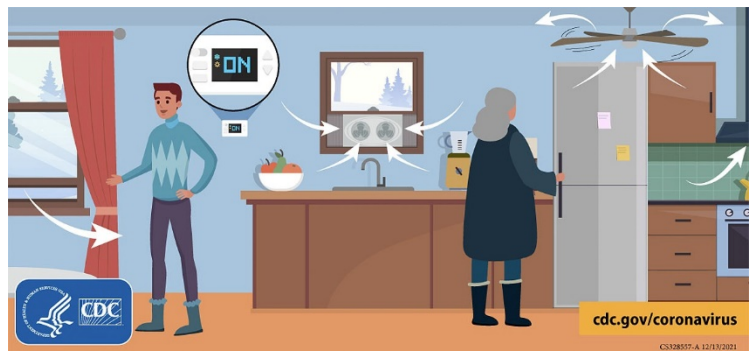


*The Centers for Disease Control and Prevention (CDC) now recommends that [Americans stay "up to date" with COVID-19 vaccines](#), rather than be "fully vaccinated." Up to date means a person has received all recommended COVID-19 vaccines, including any booster dose(s) when eligible. Fully vaccinated means a person has received their primary series of COVID-19 vaccines.

Steps Everyone Can Take to Make Gatherings Safer

If you are attending a gathering, think about the steps you need to take to protect yourself and your loved ones from COVID-19.

- Make sure you are up to date with your COVID-19 vaccines.
- In general, people do not need to wear masks when outdoors. In areas of substantial or high transmission, people might choose to wear a mask outdoors when in sustained close contact with other people, particularly if they or someone they live with has a weakened immune system or is at increased risk for severe disease.
- Consider using a self-test before joining indoor gatherings with others who do not live in your household.
- Good ventilation can help prevent you from getting and spreading COVID-19.
- Stay home if you test positive or are sick or experiencing symptoms of COVID-19.



- [Get Vaccinated Against COVID-19 for individuals age 5+](#)

Important Links for Vaccination:

- MA COVID-19 Vaccine Information: www.mass.gov/info-details/massachusetts-covid-19-vaccine-information
- Find a Vaccine Location, including boosters: www.vaxfinder.mass.gov
- COVID-19 Vaccine frequently asked questions: www.mass.gov/info-details/covid-19-vaccine-frequently-asked-questions
- COVID-19 vaccine booster shots, ages 12+: www.cdc.gov/coronavirus/2019-ncov/vaccines/booster-shot.html
- COVID-19 booster frequently asked questions: www.mass.gov/info-details/covid-19-booster-frequently-asked-questions
- Generate a COVID-19 digital vaccine card: www.MyVaxRecords.Mass.Gov
- Request a copy of your vaccine record: www.mass.gov/info-details/requesting-a-copy-of-your-covid-19-vaccination-record

- [Isolation and Quarantine Guidance for the General Public](#)

Important Links for Isolation and Quarantine:

- Mansfield COVID information: www.mansfieldma.com/601/Covid-Information
- COVID-19 Isolation and Quarantine Guidance for the General Public: www.mass.gov/info-details/covid-19-isolation-and-quarantine-guidance-for-the-general-public
- How To Talk To Your Close Contacts: www.cdc.gov/coronavirus/2019-ncov/daily-life-coping/tell-your-contacts.html
- Enable MassNotify on your smartphone: www.mass.gov/info-details/enable-massnotify-on-your-smartphone

- [Types of Masks and Respirators](#)

Due to the rapid rise in cases in the Town of Mansfield, the Mansfield Board of Health has enacted an emergency order requiring masks for all individuals aged two years and above in all indoor public spaces, places of worship, or private spaces open to the public except where an individual is unable to wear a face covering due to a medical condition or disability. This mandate will be in place until February 28, 2022. Additional information can be found on the Coronavirus webpage: [Coronavirus Information | Mansfield, MA \(mansfieldma.com\)](#)

- COVID-19 Mask Information: www.mass.gov/info-details/covid-19-mask-information
 - Your Guide to Masks: www.cdc.gov/coronavirus/2019-ncov/prevent-getting-sick/about-face-coverings.html
 - Improve How Your Mask Protects You: www.cdc.gov/coronavirus/2019-ncov/your-health/effective-masks.html
- Types of Masks and Respirators: www.cdc.gov/coronavirus/2019-ncov/prevent-getting-sick/types-of-masks.html

- [Public Health Advisory regarding COVID-19 Testing](#)

The Massachusetts Department of Public Health advises all residents to seek COVID-19 tests when exhibiting [COVID symptoms](#), or five days following a known close contact with someone diagnosed with COVID pursuant to MA DPH quarantine and isolation protocols, updated in accordance with the new CDC guidance.

Important Links for Testing:

- CDC’s online COVID-19 Viral Testing Tool: <https://bit.ly/covid-testing-tool>
- MA DPH COVID-19 Testing information: <https://www.mass.gov/covid-19-testing>
- Find a COVID-19 Test: <https://www.mass.gov/info-details/find-a-covid-19-test>
- Using a COVID-19 Self-Test: <https://www.mass.gov/info-details/using-a-covid-19-self-test>
- CDC COVID-19 Testing: <https://www.cdc.gov/coronavirus/2019-ncov/testing/index.html>
- Order free At-Home COVID-19 Tests: <https://special.usps.com/testkits>

- [Bristol county identified as an area of high transmission](#)

Bristol county has been identified by the CDC as an area of high transmission for COVID-19. The CDC recommends all people, no matter their vaccination status, wear masks indoors and in crowded outdoor settings in areas of substantial or high transmission. More information can be found [here](#).

County	COVID transmission level
Barnstable	High
Berkshire	High
Bristol	High
Dukes	High
Essex	High
Franklin	High
Hampden	High
Hampshire	High
Middlesex	High
Nantucket	High
Norfolk	High
Plymouth	High
Suffolk	High
Worcester	High

Bristol County, Massachusetts

[State Health Department](#) 

7-day Metrics | [7-day Percent Change](#)

Community Transmission ● High

Everyone in **Bristol County, Massachusetts** should wear a mask in public, indoor settings. Mask requirements might vary from place to place. Make sure you follow local laws, rules, regulations or guidance.

How is community transmission calculated?

February 2, 2022

Cases	4,363
Case Rate per 100k	771.92
% Positivity	N/A
Deaths	64
% of population ≥ 5 years of age fully vaccinated	66.8%
New Hospital Admissions	177

Data from [CDC COVID Data Tracker](#)

- [Mansfield Public School COVID information and dashboard](#)

For information about the schools and COVID, please see their School Health and COVID Information webpage: <https://sites.google.com/mansfieldschools.com/covid-19/home>