

## COMMUNITY UPDATE COVID-19

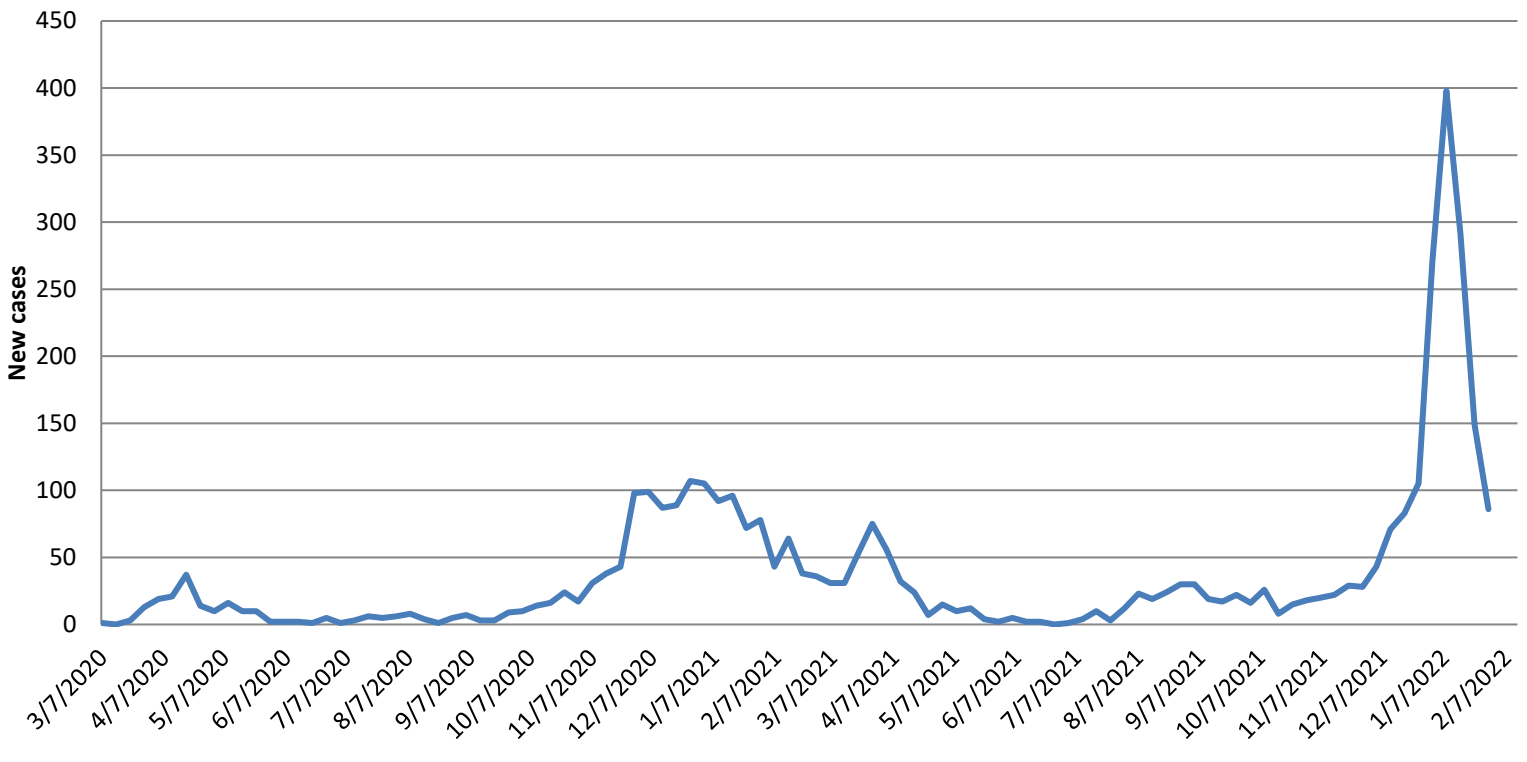
**February 1, 2022:**

The Town of Mansfield continues its community update on our website with our up to date information and important tips for the public as it relates to the COVID-19 pandemic. For more complete information, please see the town [coronavirus webpage](#).

- **As of today, please see the below chart that represents our communities COVID-19 relates cases:**

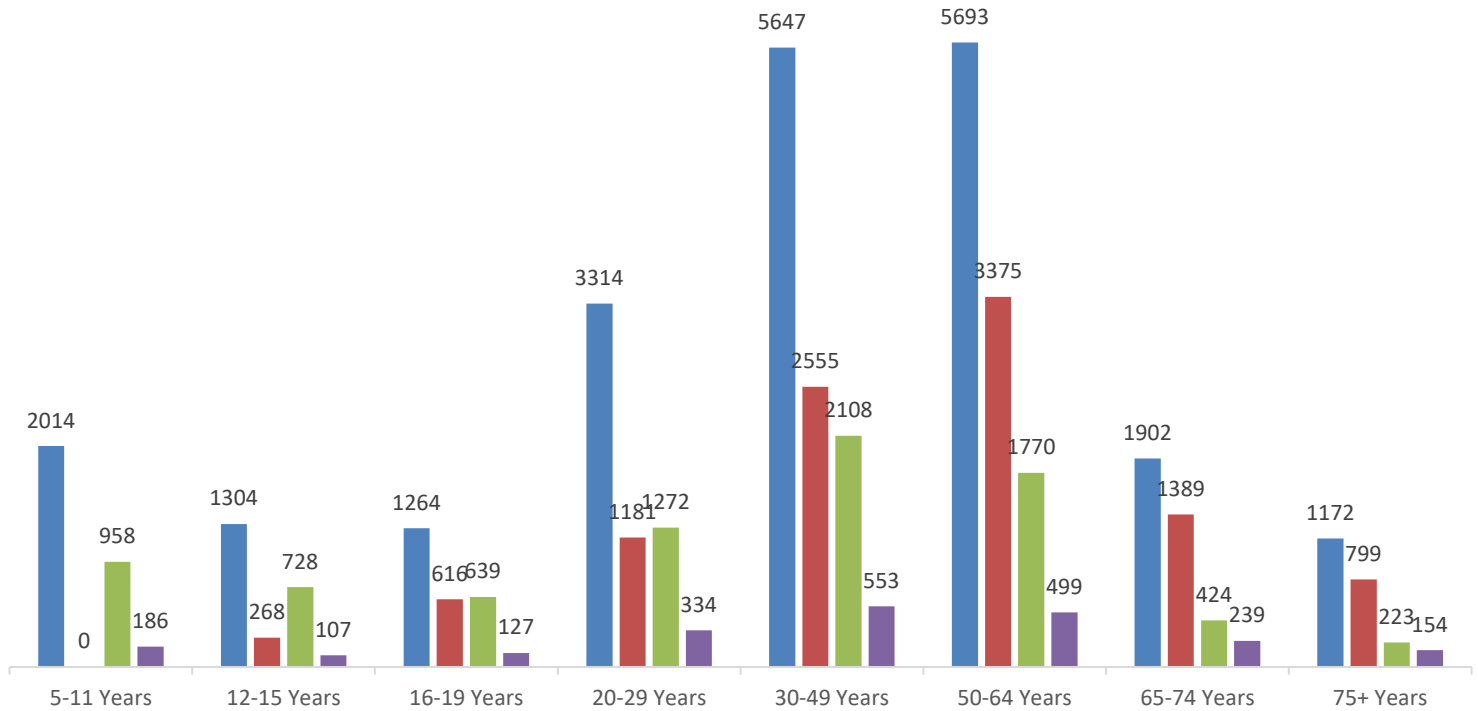
| <i>Mansfield Covid-19 Workflow</i>            | #           |                                       |
|---|-------------|---------------------------------------|
| <b>Positive COVID-19 under isolation</b>      | <b>87</b>   | (updated 02/01 08:00)                 |
| <b>Positive Cases recovered</b>               | <b>3878</b> |                                       |
| <b>Total tested positive since beginning:</b> | <b>3995</b> |                                       |
| <b>Covid-19 Related Deaths</b>                | <b>30</b>   | Last Covid death in Mansfield 1/18/22 |

**New COVID-19 cases per week  
March 7, 2020 - January 29, 2022**



## Vaccine Distribution in Mansfield- data through January 25, 2022\*

■ Population ■ Individuals with booster doses ■ Fully vaccinated individual, no booster ■ Partially vaccinated individuals



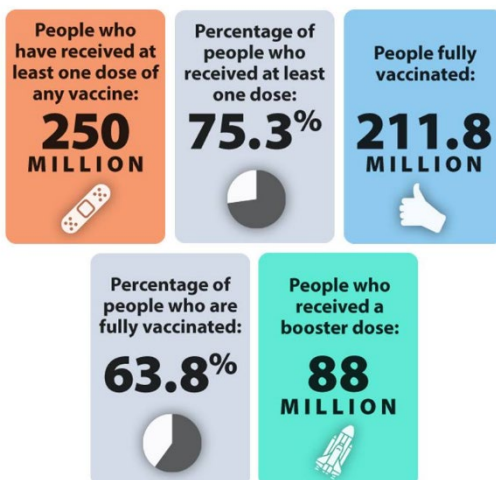
Booster doses recommended for ages 12+

All data obtained from [Massachusetts COVID-19 vaccination data and updates | Mass.gov](https://www.mass.gov/info-details/massachusetts-covid-19-vaccination-data-and-updates)

\*The Centers for Disease Control and Prevention (CDC) now recommends that [Americans stay "up to date" with COVID-19 vaccines](#), rather than be "fully vaccinated." Up to date means a person has received all recommended COVID-19 vaccines, including any booster dose(s) when eligible. Fully vaccinated means a person has received their primary series of COVID-19 vaccines.

### COVID DATA TRACKER

#### U.S. COVID-19 Vaccination Progress



Find the latest data on [CDC's COVID Data Tracker](#)

Data as of January 31, 2022  
Source: COVID Data Tracker - Vaccinations



As of January 31, 2022, 250 million people, or about 75.3% of the U.S. population, have received at least one dose of a COVID-19 vaccine. Of those, 211.8 million, or about 63.8%, are fully vaccinated. More than 88 million people have received a booster dose.

Everyone ages 5 years and older should get vaccinated against COVID-19 as soon as they can, and everyone 12 years and older should get a booster when eligible. Stay up to date on your vaccinations. Find a COVID-19 vaccine or booster near you: [www.vaxfinder.mass.gov](https://www.vaxfinder.mass.gov)

For more COVID-19 vaccination data, visit [http://bit.ly/CDT\\_vaccine](http://bit.ly/CDT_vaccine).

- [Get Vaccinated Against COVID-19 for individuals age 5+](#)

#### **Important Links for Vaccination:**

- MA COVID-19 Vaccine Information: [www.mass.gov/info-details/massachusetts-covid-19-vaccine-information](http://www.mass.gov/info-details/massachusetts-covid-19-vaccine-information)
- Find a Vaccine Location, including boosters: [www.vaxfinder.mass.gov](http://www.vaxfinder.mass.gov)
- COVID-19 Vaccine frequently asked questions: [www.mass.gov/info-details/covid-19-vaccine-frequently-asked-questions](http://www.mass.gov/info-details/covid-19-vaccine-frequently-asked-questions)
- COVID-19 vaccine booster shots, ages 12+: [www.cdc.gov/coronavirus/2019-ncov/vaccines/booster-shot.html](http://www.cdc.gov/coronavirus/2019-ncov/vaccines/booster-shot.html)
- COVID-19 booster frequently asked questions: [www.mass.gov/info-details/covid-19-booster-frequently-asked-questions](http://www.mass.gov/info-details/covid-19-booster-frequently-asked-questions)
- Generate a COVID-19 digital vaccine card: [www.MyVaxRecords.Mass.Gov](http://www.MyVaxRecords.Mass.Gov)
- Request a copy of your vaccine record: [www.mass.gov/info-details/requesting-a-copy-of-your-covid-19-vaccination-record](http://www.mass.gov/info-details/requesting-a-copy-of-your-covid-19-vaccination-record)

- [Isolation and Quarantine Guidance for the General Public](#)

#### **Important Links for Isolation and Quarantine:**

- Mansfield COVID information: [www.mansfieldma.com/601/Covid-Information](http://www.mansfieldma.com/601/Covid-Information)
- COVID-19 Isolation and Quarantine Guidance for the General Public: [www.mass.gov/info-details/covid-19-isolation-and-quarantine-guidance-for-the-general-public](http://www.mass.gov/info-details/covid-19-isolation-and-quarantine-guidance-for-the-general-public)
- How To Talk To Your Close Contacts: [www.cdc.gov/coronavirus/2019-ncov/daily-life-coping/tell-your-contacts.html](http://www.cdc.gov/coronavirus/2019-ncov/daily-life-coping/tell-your-contacts.html)
- Enable MassNotify on your smartphone: [www.mass.gov/info-details/enable-massnotify-on-your-smartphone](http://www.mass.gov/info-details/enable-massnotify-on-your-smartphone)

- [Types of Masks and Respirators](#)

Due to the rapid rise in cases in the Town of Mansfield, the Mansfield Board of Health has enacted an emergency order requiring masks for all individuals aged two years and above in all indoor public spaces, places of worship, or private spaces open to the public except where an individual is unable to wear a face covering due to a medical condition or disability. This mandate will be in place until February 28, 2022. Additional information can be found on the Coronavirus webpage: [Coronavirus Information | Mansfield, MA \(mansfieldma.com\)](#)

- COVID-19 Mask Information: [www.mass.gov/info-details/covid-19-mask-information](http://www.mass.gov/info-details/covid-19-mask-information)
  - Your Guide to Masks: [www.cdc.gov/coronavirus/2019-ncov/prevent-getting-sick/about-face-coverings.html](http://www.cdc.gov/coronavirus/2019-ncov/prevent-getting-sick/about-face-coverings.html)
  - Improve How Your Mask Protects You: [www.cdc.gov/coronavirus/2019-ncov/your-health/effective-masks.html](http://www.cdc.gov/coronavirus/2019-ncov/your-health/effective-masks.html)
- Types of Masks and Respirators: [www.cdc.gov/coronavirus/2019-ncov/prevent-getting-sick/types-of-masks.html](http://www.cdc.gov/coronavirus/2019-ncov/prevent-getting-sick/types-of-masks.html)

- [Public Health Advisory regarding COVID-19 Testing](#)

The Massachusetts Department of Public Health advises all residents to seek COVID-19 tests when exhibiting [COVID symptoms](#), or five days following a known close contact with someone diagnosed with COVID pursuant to MA DPH quarantine and isolation protocols, updated in accordance with the new CDC guidance.

**Important Links for Testing:**

- CDC’s online COVID-19 Viral Testing Tool: <https://bit.ly/covid-testing-tool>
- MA DPH COVID-19 Testing information: <https://www.mass.gov/covid-19-testing>
- Find a COVID-19 Test: <https://www.mass.gov/info-details/find-a-covid-19-test>
- Using a COVID-19 Self-Test: <https://www.mass.gov/info-details/using-a-covid-19-self-test>
- CDC COVID-19 Testing: <https://www.cdc.gov/coronavirus/2019-ncov/testing/index.html>
- Order free At-Home COVID-19 Tests: <https://special.usps.com/testkits>

- [Bristol county identified as an area of high transmission](#)

Bristol county has been identified by the CDC as an area of high transmission for COVID-19. The CDC recommends all people, no matter their vaccination status, wear masks indoors and in crowded outdoor settings in areas of substantial or high transmission. More information can be found [here](#).

| County     | COVID transmission level |
|------------|--------------------------|
| Barnstable | High                     |
| Berkshire  | High                     |
| Bristol    | High                     |
| Dukes      | High                     |
| Essex      | High                     |
| Franklin   | High                     |
| Hampden    | High                     |
| Hampshire  | High                     |
| Middlesex  | High                     |
| Nantucket  | High                     |
| Norfolk    | High                     |
| Plymouth   | High                     |
| Suffolk    | High                     |
| Worcester  | High                     |

## Bristol County, Massachusetts

[State Health Department](#)

### 7-day Metrics | [7-day Percent Change](#)

Community Transmission ● High

Everyone in **Bristol County, Massachusetts** should wear a mask in public, indoor settings. Mask requirements might vary from place to place. Make sure you follow local laws, rules, regulations or guidance.

How is community transmission calculated?

February 1, 2022

|   |          |
|---|----------|
| Cases   | 5,734    |
| Case Rate per 100k                                | 1,014.48 |
| % Positivity                                      | 16.17%   |
| Deaths  | 59       |
| % of population ≥ 5 years of age fully vaccinated | 66.7%    |
| New Hospital Admissions                           | 171      |

Data from [CDC COVID Data Tracker](#)

- [Mansfield Public School COVID information and dashboard](#)

For information about the schools and COVID, please see their School Health and COVID Information webpage: <https://sites.google.com/mansfieldschools.com/covid-19/home>